

STANLEY[®]

Security Solutions



KEY & CORE CONTROL

KEYSTONE[®] 600N5





KEYSTONE® 600N5 SOFTWARE

File	Edit	Cards	Commands	Details	Cross Reference	Help
Facility	Keyring	Part	Masterkey	Out of Service	Product	Reports
Building	Cabinet	Core	Coremark	Department	Door	Employee
Hook	Key	Keymark				
Last Name: ADAMS First: SAM MI: R ID: 987-23-1234 Dept: HUMAN RESOURCES Type: TEMP SERVICE Description: Title: SECRETARY						
KEYS held by this EMPLOYEE - 19						
Key Number	Level	Keyway	Product	Keyring	Issued	Due
E1-2	OP	A			12/08/98	
E1-3	OP	A			12/08/98	
E1-4	OP	A			12/08/98	
E1-5	OP	A			12/08/98	
E1-6	OP	A			12/08/98	
E1-7	OP	A			12/08/98	
E1-8	OP	A			12/08/98	
E1-9	OP	A			12/08/98	
E1-10	OP	A			12/08/98	
E1-11	OP	A			12/08/98	
E4-1	OP	A	1A1A1		07/15/88	
F8-2	OP	A			12/09/98	
G1-3	OP	A			02/16/99	
G1-4	OP	A			02/16/99	
G1-5	OP	A				02/21/99
Summary [Notes] Cores Keys Keyrings Parts [History] Items Cross ref Cores Cross ref Buildings Cross ref Doors						
F1	Help	F2	Next EMPLOYEE card	Alt	Cross Reference Menu	
F3	Add new EMPLOYEE card	F4	Previous EMPLOYEE card	Ctrl	Edit Menu	
F5	Issue new KEY	F6	Jump to KEYMARK card	Shift	Detail Menu	
F7	Return a KEY	F8	Print EMPLOYEE card			
F9	Issue existing KEY	F10	Find an EMPLOYEE			

Demo Facility

The Best Access System Keystone® 600N5 key and core control software offers all of the same security, convenience, and functionality found in the original Keystone® 600 program, but with the added ability to operate in a network configuration. Keystone® 600N5 will assist you with the tedious task of managing your key and core multiple people in different locations may need to access the data simultaneously. Designed to operate over modern network environments, such as Windows® NT, XP or Windows® 2000. Keystone® 600N5 includes special help screens that can be accessed whenever you need assistance.

Complex commands and detailed menu trees are eliminated by the function key index at the bottom of each screen. Select the information tab desired and the appropriate screen is called up. Instructions and help screens are immediately available.

KEYSTONE® 600N5 FEATURES

Security

- Password restricted logins enable administration to restrict individuals access for designated cards

Buildings

- Designed to support multiple facilities
- Display people, keys and departments with access to a building
- Lists departmental access, designating the people, keys and keyrings that have access to that department
- Displays buildings with doors, cores and locks in the building

Keys

- List all keys and items currently due back (or due back by any day designated)
- Lists keys that have been issued and keyholders
- On-screen display of BEST masterkey code records entered
- Records issuance of keys, keyrings, cores and locks to people
- Maintains historical records on all keys, keyrings, cores and locks
- Shows all "keyrings", keyring holders, and what buildings, cores and doors the keyring accesses
- Maintains "key cabinet" records displaying the keys, keyrings and locks located on a "hook"
- Tracks "out-of-service" keys, keyrings and other items that are lost, stolen or destroyed
- Displays cores, departments, doors, buildings keys can access

Cores

- Lists all cores and their location, buildings and doors
- Cross-references employees, keys and departments

People

- Displays people, keys, keyrings, cores, locks on one record
- Maintains list of deleted employees (and doors) with the ability to display and reactivate them
- Searches for and identifies people by name, ID, department, title and type
- Cross-references people to cores, doors, buildings they access

Locks

- Displays locks, lock location and the people, keys and departments with access to that lock
- Lists manufacturer product records with items connected specifically to that manufacturer's product

Doors

- Shows the doors with cores, locks and other items that are installed on the door
- Displays doors and people, keys and departments that can access those doors

Software – general

- Comprehensive list of reports available as an on-screen menu
- Built-in easy-to-use backup program
- Program always displays date of last backup
- Lists users who made backups with dates
- Dynamic searching capability for all records
- Large note field available on all card records
- On-screen indicator shows when historical info. is present for a record
- On-screen indicator appears when notes are present on a record
- Able to operate in an NTFS network environment with TCPIP protocol
- Multiple users can access program at same time
- Stanley service that Import/Append data (Some formats)
- Mass deletion

SCREEN TAB DEFINITIONS

BUILDING CARD

This card allows you to track the door, cores and locks in each building. It also cross-references the employees, keys and departments that access the designated building.

CORE CARD

COREMARK CARD



When special "selective" keying is designed and used in a facility system, these cards will track the keys that can

operate a selective core. These cards maintain historic information of cores and cross-references the employees, keys and departments that operate the core. They also maintain the building and door location of a core. An automated pin segment calculator is available with these cards.

CABINET CARD

HOOK CARD

These cards allow you to record and reference the cores, keys locks, and keyrings that are located in your cabinet.

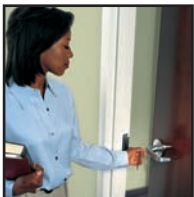
DEPARTMENT CARD

This card lists the employees, cores, keys, and key rings that are associated with a department. It cross-references the cores, buildings and doors that a department can access.

DOOR CARD

This card allows you to maintain records of the cores and locks in a designated door and provides a cross-reference to the employees, keys and departments that can access that door.

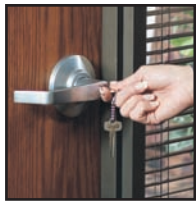
EMPLOYEE CARD



This card maintains records on the keys, cores, key-rings and locks that a person is issued. It cross-references

the cores, doors, and buildings that a person can access with their keys and keyrings.

FACILITY CARD



This card tracks all keys, keyrings and locks issued and reports their status when due for return. This function allows

you to view items due for return today and for previous days. This card displays a summary count of buildings, departments, doors, employees, cores, keys, keyrings, and locks in the facility database. It also tracks the dates. Backups are made and identifies who did the backup.

KEY CARD

KEYMARK CARD

These cards display the key marks, key serial numbers and any history of a key. They permit the cross-referencing of the employees with keys issued and the associated cores, doors, and departments that can be accessed by that key.

KEYRING CARD

When multiple keys are issued to an individual, many times a "keyring" is used to organize the issuance and control. This card tracks the keyring as a single file. This card shows current and historic information of the keys attached to the assigned keyring. It also cross-references the keyring keys to associated employees, cores, doors and buildings involved.

MASTERKEY CARD



This card allows you to display BEST masterkey code sheets for your system. It also includes a manual pin

segment calculator (requires that all key cut numbers have to be typed in for each key).

OUT-OF-SERVICE

This card tracks and maintains historic information for items (i.e. cores, keys, keyrings, and locks) that are reported lost, destroyed or stolen.

PART CARD

With this card, locks can be identified by:

- manufacturer
- nomenclature
- serialization

It also displays the core used in the designated lock (includes historical information for installed cores). It also permits the cross-referencing of that lock to employees, keys, and departments. This card can also report the lock's "disposition" (defined as the location of that lock, i.e. cabinet, door, employee, hook, destroyed, lost, stolen or unassigned).

PRODUCT CARD



This card allows for the tracking of a product by:

- the manufacturer's name
- catalog number
- type of product

(key, core, lock or other). It also gives the past history of locks that have been used in that product.

REPORTS CARD

This card allows for a vast array of standardized reports to be generated by:

- employee name or identification
- door location
- core
- key
- department or building
- others

SITE CARD



This card identifies the list of facilities that are being tracked, as well as the list of users with program access.

UNASSIGNED

This card displays records on keys, cores, keyrings, and locks when a key cabinet is not used for organizing key storage.

USER CARD

This card maintains records for the setting of security passwords allowing various levels of access to the Keystone® 600N program by security personnel and program users.

SPECIFICATIONS

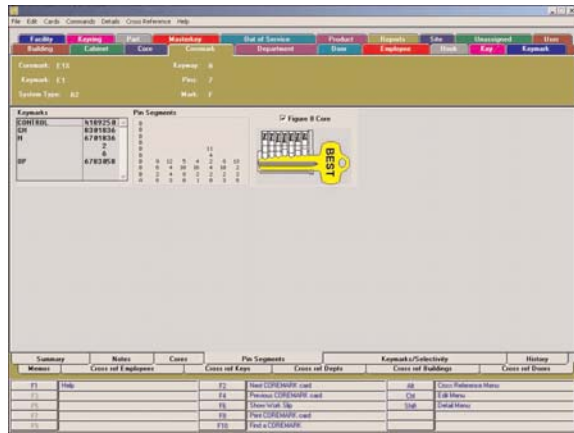


Hardware Requirements

The Best Access Systems Keystone® 600N5 Key and Core Control software requires the following minimum hardware configuration for operation:

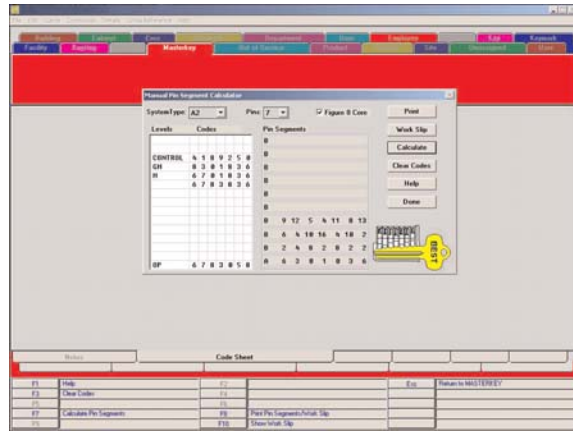
- Workstation (client) with 12MB fixed disk space with Windows® 98, NT, XP or 2000.
- Pentium Processor
- 64MB Memory
- 12MB Hard drive space
- CD ROM drive
- Keyboard and mouse
- VGA Color monitor
- Windows® NT, 2000 or XP with TCPIP protocol

PIN SEGMENTS



Automated Pin Segment Calculator

- BEST pin segments generated automatically from information entered into the Keystone® 600N5 program



Manual Pin Segment Calculator

- Simple entry of key cut numbers determines proper pin segments
- Determine single/double shear line combinations
- Security "work slip" feature allows printing of segments for combining Best products without revealing key cuts
- Accommodates combining of complex selective Best masterkeying
- Instantly displays Best pin segments for combining Best cores

HOW TO ORDER

KS Series	600N Product	1 Number of Logins	1 Facility Database Number
KS – key control software	600N – full install for KS600N software* 600NUP – upgrade from KS600 V3.53 or higher 600N5 – upgrade from KS600N	1 – 5 logins (default) 2 – 10 logins 3 – 15 logins	1 – one facility database (default) 2 – two facility databases 3 – three facility databases etc.

*Upgrades from G600 or a KS600 versions below 3.53 requires a full installation of KS600N

KS Series	600NLU Product	1 Number of Logins
KS – key control software	600NLU – increase the number of logins for an existing KS600N installation	1 – add 5 logins 2 – add 10 logins 3 – add 15 logins etc.

KS Series	600NDB Product	1 Number of Logins
KS – key control software	600NDB – add more facility databases to an existing KS600N installation	1 – add 1 facility database 2 – add 2 facility database 3 – add 3 facility database, etc.

Stanley Security Solutions, Inc.

6161 E. 75th Street Indianapolis, Indiana 46250

www.stanleysecuritysolutions.com

© 2006 Stanley Security Solutions, Inc. and Stanley Logistics

10M 906FP
BAS006 Litho USA