

## **Basis / Lenel World Time Zone Patch Utility**

The start and end dates for Daylight Savings Time in the United States, as well as several other countries, will be changing in 2007 as required by the United States "Energy Policy Act of 2005". This utility will update the world time zone/daylight savings time information stored in the system database(s) for these changes.

*This patch will ONLY work upon Basis / Lenel systems that are of product versions: 5.10.423, 5.11.105, 5.11.216, or 5.12.012.*

*This Patch will ONLY work upon Basis / Lenel systems that are running on the following database structures: MSDE, SQL Server Express, SQL Server, or Oracle.*

*This Patch will ONLY work upon Basis / Lenel systems that are installed on the following Microsoft Operating Systems: Windows XP with Service Pack 2, Windows 2003, or Windows 2003 with Service pack 1. (Please note that ALL machines running any Basis / Lenel software must meet these OS requirements.)*

If you are running Basis / Lenel software that does not meet ALL the criteria above you will need to contact our National Service Center at [nsc@stanleyworks.com](mailto:nsc@stanleyworks.com) or 877-SS1-4YOU (877-771-4968) for additional assistance in updating your product to be compatible with the new 2007 Daylight Savings Time rules.

**Do NOT continue with the installation if your system does not meet the criteria above!**

BEFORE applying the Basis / Lenel World Time Zone Patch Utility, you MUST have already applied the Microsoft Daylight Savings Time Patch to your Microsoft operating system. Please verify that all Microsoft Windows devices are updated first using patches or methods supplied by Microsoft. Devices that must be upgraded include all servers, clients, Intelligent Video servers, LNVR and LDVR video recorders, and other servers such as archive and database servers.

For more information on these patches you can visit [http://support.microsoft.com/gp/dst\\_topissues](http://support.microsoft.com/gp/dst_topissues). If you wish to download the patches directly you may visit <http://support.microsoft.com/kb/931836>.

When applying the patches on NEC cluster systems, follow the documented procedures for properly rebooting the NEC servers. For more information, refer to the documentation for the NEC system.

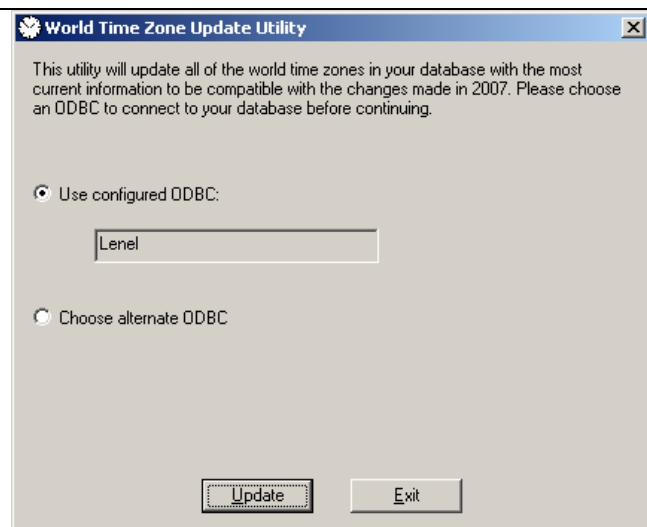
**Stanley Security Solutions Technical Support Group cannot provide support for updating the world time zones in Microsoft Windows operating systems.**

Download (and if necessary, unzip) the Basis / Lenel World Time Zone Utility file.

Double click on the World Time Zone Utility.exe file and the following screen should appear.

Select Use Configured ODBC and make sure LENEL appears in the box below that selection.

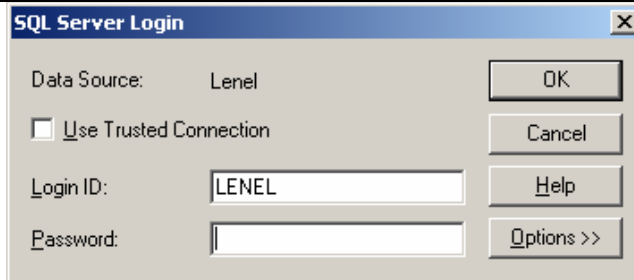
Click Update.



On the SQL Sever Login page that appears, uncheck Use Trusted Connection.

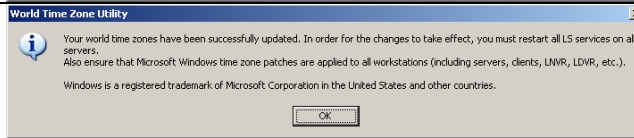
In the Login ID field enter LENEL  
In the Password field enter MULTIMEDIA

Click on OK.



When the following screen appears the update has been completed.

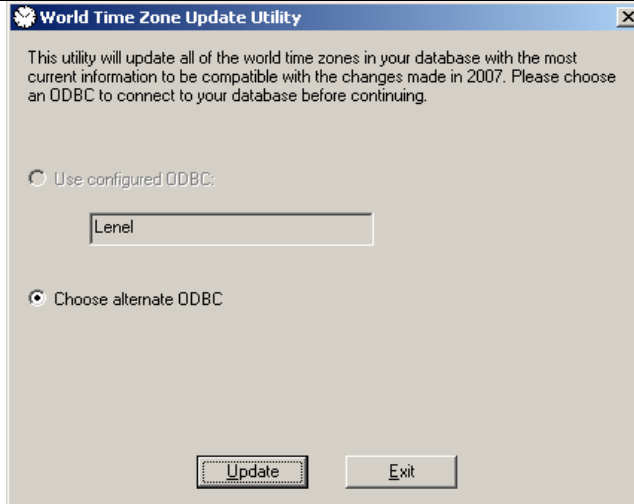
Click on OK.



You will be returned to this screen where you should now choose EXIT.

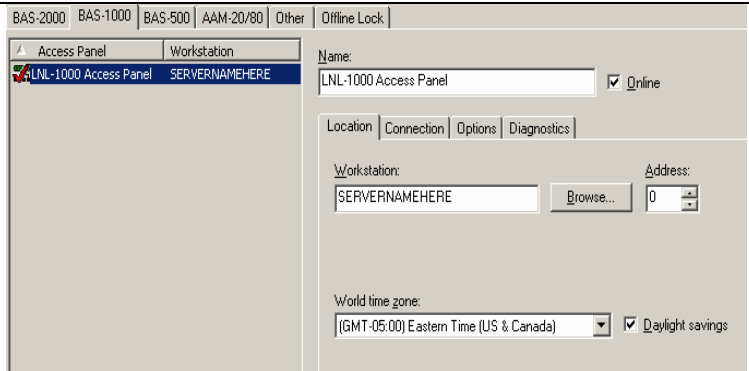
Upon exiting the program, you will need to restart any and all machines that have any Basis or Lenel service running upon them. These include the Login, License, Communication, Linkage, Global Output, and/or Data Exchange Services.

If you have an enterprise system, this patch must be ran in every region.



After rebooting your systems, you will need to confirm that all panels in Basis / Lenel are set to the correct world time zone and that the checkmark for automatically adjust for daylight savings time is checked (or not checked) to follow the timezone that the panels are located in.

To Check the access panels, open System Administration, select Access Control from the pull down menus, and then Access Panels. Go through each tab and each panel verifying the World Time Zone and Daylight Savings Checkmark.



### Special Notes about Searching Recorded Video for the Daylight Savings Time Change Period:

To search video that was recorded the hour before or after the Daylight Savings Time changeover, you must perform two searches instead of one. For example, in the Eastern Standard Timezone the Daylight Savings Time changeover occurs at 2:00 a.m. To view video that was recorded between 1:00 a.m. and 3:30 a.m., perform two searches. For the first search, specify 1:00 a.m. for the Start time and 1:59:59 for the End time. For the second search, specify 3:00:01 a.m. for the Start time and 3:30 a.m. for the End time. Use this same technique when exporting video recorded during the changeover time.

Attempting to play or export a continuous video clip with a Start time before 2:00 a.m. to an End time after 3:00 a.m. is not recommended and may result in undesired playback behavior. For this reason, search and/or export recorded video before the Daylight Savings Time changeover separate from video after the changeover.

If you receive the message: "The end time must not be before the start time." set the End time to 1:59.59 a.m. not 2:00:00 a.m.

If you receive the message: "The time requested is not available on the Video Recorder, and could not be located on the Video Archive Server." set the Start time to 3:00:01 a.m. not 3:00:00 a.m.