

The following instructions are required for installation of Best Access System's Keystone® 600N (KS600N) network key control software for client applications. Make sure that the server installation is complete before starting any client installation. See the instructions, *Installation Instructions for Keystone 600N Server and Stand-Alone Applications* for complete step-by-step instructions.

Important: A qualified computer network technician must perform the following installation procedure.

1 Install the Keystone 600N software

- 1 Exit all Microsoft® Windows® software applications.
- 2 From the Windows desktop, double-click the Network Neighborhood icon or the **My Network Places** icon.
- 3 Double-click the **Entire Network** icon 
- 4 Double-click the **Microsoft Windows Network** icon. 
- 5 Double-click the **Workgroup** icon. 
- 6 Double-click the **server** icon where the Keystone 600N server application was installed.
- 7 Double-click the **Client** folder.
- 8 Double-click **Setup.exe**.

The Installation process begins and the Welcome screen displays



Figure 1 Confirming you want to continue to install Keystone 600N

- 9 At the *Welcome* screen, click **Next**.

The *Destination Folder* window displays

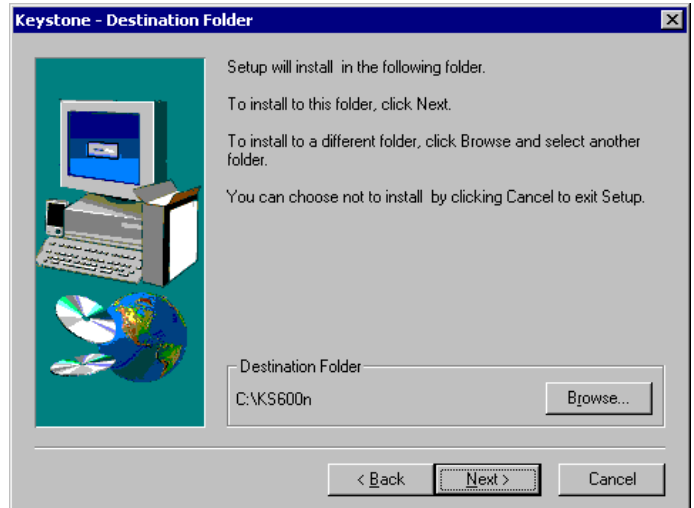


Figure 2 Confirming you want to install Keystone 600N at the root

- 10 To install Keystone 600N software in the default folder, click **Next**, or

If you are required or you prefer to install the software in another folder, click **Browse** and browse to the folder where you need to install KS600N.

Caution: Do not install the client software onto a removable drive.

After the software is installed, the *Add Icon to Desktop* window displays

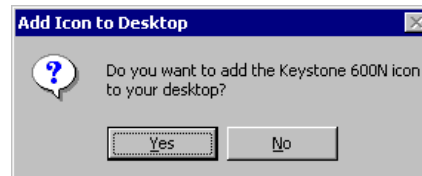


Figure 3 Confirming whether to place the Keystone 600N icon on the desktop

- 11 Click **Yes** to install the icon onto your Windows desktop, or
Click **No** if you don't need the icon.

The installation wizard will then let you know that the Keystone 600N application has been installed.

- 12 Click **OK**.

The *Setup Complete* wizard window displays

If you cannot restart your computer at this time . . .

- 13a Click 'No, I will restart my computer later.' Then click **Finish**.

Otherwise . . .

- 13b Click 'Yes, I want to restart my computer now.' Then click **Finish**.

2 Log into the Keystone 600N software for the first time

- 1 If you do not yet have your User Login name and password, see your Keystone 600N Administrator.
- 2 From your desktop, double-click on the Keystone 600N icon:



Figure 4 Keystone 600N desktop icon

or

From your desktop, click the Start button > Keystone 600N > Keystone 600N.

The Keystone 600N software starts and the login window displays

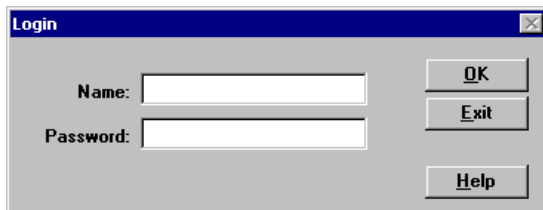


Figure 5 Logging into Keystone 600N.

- 3 In the Name field type the login name that your Keystone 600N Administrator gave you.
- 4 In the Password field, type the password.

Note: The Keystone 600N software converts all lowercase letters to uppercase letters. Consequently, regardless of whether you have the Caps Lock key on, all typing will be in capital letters.

- 5 Click **OK**.

3 Change your login password

- 1 From the menu, select Cards > User, or click on the User card tab.
- 2 Press **CTRL + F5**. (While holding down the Control key, press the F5 key.)
- 3 Type the new password. Passwords can be any series of one to eight characters. Do not use spaces.
- 4 Press the **F10** function key to save the new password.

The login will now be the login name that the Keystone 600N Administrator gave you and the password will be the new password you just entered.

Hardware and software requirements

- Windows® NT, 2000, or XP
- minimum 64 MB RAM
- minimum 12 MB free hard disk space