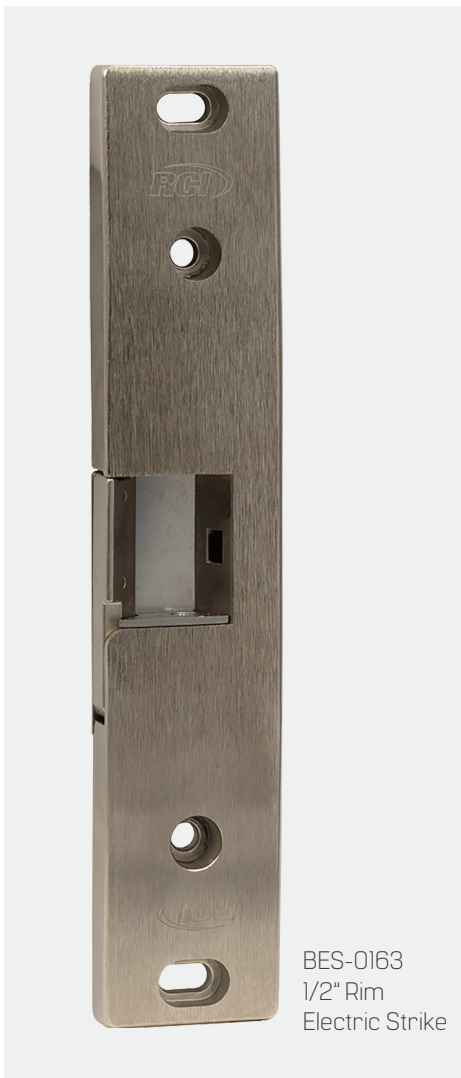




BES-0163 1/2" Rim Electric Strike



This solenoid rim strike is a surface-mounted electric strike designed to work with Pullman style rim exit device latches.

Features

- Designed to fit in tight situations where the exit device is mounted very close to the door frame, e.g. aluminum storefront applications.
- For maximum latch engagement, the strike keeper has been designed to pivot out of the strike body versus rolling out of the strike.
- Accommodates 1/2" to 3/4" [13 mm–19 mm] latch projection.
- Horizontal adjustment ensures proper latch positioning to compensate for door misalignment – up to 1/4" [6.4 mm].
- Shim may be added to the strike cavity to engage with misaligned deadlatch.
- Lockdown holes for secure mount.
- Cooler operation – runs cool to the touch; no suppressor kit needed.
- High-grade stainless steel ensures superior strength and creates a sleek aesthetic.
- Non-handed.
- Plug-in wire connectors.
- UL294 Listed for Access Control Unit Accessory (6th Edition).
- UL1034 burglary-resistant Listed.
- High quality, Grade 1 BHMA
- Also available BES0163LM (Latch Monitor)

Specifications



Energy
270mA 12VDC



Mode
Fail-Secure



Strength
1,500lbf Static
70ft-lb Dynamic



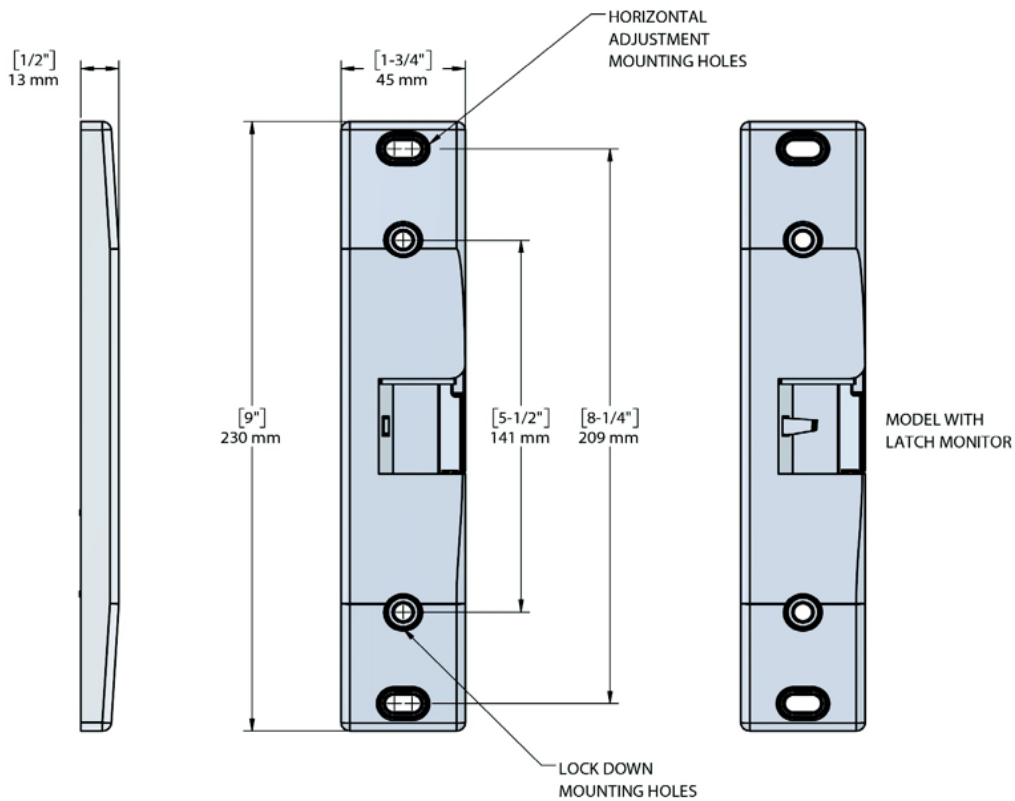
Endurance
Grade 1 BHMA
500,000 Cycles



Warranty
5 Year Limited Warranty



Monitoring
Optional Latch Monitor
Model Available



BA0340 06_20

For questions about ordering and to be sure you get the right configuration for your needs, [contact your BEST dormakaba sales representative](#).
6161 East 75th Street, Indianapolis, IN 46250 USA | [855-365-2407](tel:855-365-2407) | bestaccess.com