









Surface MiniMag®  
**BML-8360** (For single sliding doors)  
**BML-8371** (For single outswinging doors)\*\*  
**BML-8372** (For double outswinging doors)\*\*

## Our low-profile MiniMag® is extremely popular for interior traffic control.

These short electromagnetic locks install perfectly alongside most automatic door operators or stop-mounted door hardware, reducing installation time and eliminating the need for extra brackets.

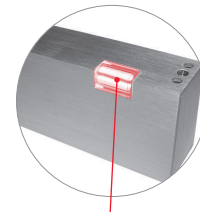
The MiniMag's® design of 1-7/8" width helps keep undersized openings within code. This is the ideal magnet for use on narrow-style aluminum doors. The BML-8372 double version is especially useful on pairs of doors without mullions.

- 
**Energy**  
 500mA<sup>1</sup> (BML-8360)  
 520mA<sup>1</sup> (BML-8371/BML-8372)  
 Field-Selectable 12/24VDC
- 
**Fire-Rated**  
 (BML-8371/BML-8372)  
 CAN/ULC S104  
 UL 10C 1-Hour
- 
**Strength**  
 Up to 750lbf Holding Force
- 
**Monitoring**  
 (BML-8360) Built-In Remote  
 Lock Status Sensor  
 (BML-8371/BML-8372)  
 Optional Door Status Sensor  
 (DSS)/Security Condition Sensor  
 (SCS) Available
- 
**Warranty**  
 Lifetime Limited Warranty
- 
**Mode**  
 Fail-Safe

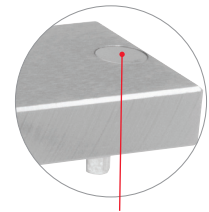
## Electromagnetic Locks

### Secure, convenient and easy to install.

Our low-profile Surface MiniMags® provide a secure hold, ensuring proper ingress and egress at all times.



LED Indicator  
(For 8371/8372 models with  
SCS monitoring only)



Magnetic Door Contact  
(For 8371/8372 models with  
DSS monitoring only)

#### Product specifications

	<b>BML-8371</b> Surface MiniMag®	<b>BML-8372</b> Surface MiniMag®	<b>BML-8360</b> Mortise MiniMag®
<b>Housing dimensions</b>	1" (25mm) x 1-7/8" (48mm) x 9-3/8" (238mm) DWL Dimensions include 3/16" (5mm) mounting bracket	1" (25mm) x 1-7/8" (48mm) x 17-3/4" (476mm) DWL Dimensions include 3/16" (5mm) mounting bracket	1-1/16" (26.9mm) x 1-1/2" (38.1mm) x 9" (228.6mm) DWL Dimensions include 3/4" (19mm) mounting tabs
<b>Armature plate dimensions</b>	1/2" (13mm) x 1-1/2" (38mm) x 7-1/4" (185mm) DWL		
<b>Voltage</b>	Field selectable 12/24VDC; Tolerance ±10%		
<b>Power/current requirements</b>	Max 0.52A at 12VDC; Max 0.26A at 24VDC (each lock)		Max 0.50A at 12VDC Max 0.25A at 24VDC
<b>Holding force</b>	Up to 750 lbs (340kg) (one point locking)	Up to 750 lbs (340kg) (two point locking)	Up to 750 lbs (340kg) (one point locking)
<b>Output relays</b>	SCS (with LED)–SPDT 1.0A at 24VDC; DSS–SPDT 0.20A at 12VDC and 0.12A at 24VDC		Contacts: 0.20A at 12VDC and 0.12A at 24VDC; Dry Output Form C
<b>Wiring requirements</b>	2 wires–power input; Up to 5 wires output	2 or 4 wires–power input; Up to 5-10 wires output	2 wires–power input; 2 wires–relay output
<b>Operating temperature</b>	14° to 140° F (-10° to 60° C)		
<b>Finishes</b>	28 Brushed Anodized Aluminum (630) 40 Brushed Anodized Dark Bronze (690)		28 Brushed Anodized Aluminum (630)
<b>Warranty</b>	Lifetime Limited Warranty		
<b>Monitoring options</b>	SCS–Security Condition Sensor (includes LED indicator) DSS–Door Status Sensor		Built-in remote Lock Status Sensor
<b>Certifications</b>	UL 294 Special Locking Arrangement Component (6th Edition) CAN/ULC S104 Auxiliary Locks Listed for fire doors rated up to 1 hour UL 10C Auxiliary Locks Listed for fire doors rated up to 1 hour		N/A

#### Optional accessories†

	<b>BML-TJ71</b>	<b>BML-TJ72</b>	
<b>Z-bracket kit</b>			
<b>Glass door bracket</b>	<b>BML-GB7112</b> 1/2" (13mm) <b>BML-GB7134</b> 3/4" (19mm)	<b>BML-GB7212</b> 1/2" (13mm) <b>BML-GB7234</b> 3/4" (19mm)	
<b>Armature plate holder</b>	<b>BML-AH71</b>	<b>BML-AH72</b>	

BML-8371 and BML-8372



<sup>1</sup> Max at 12VDC for 8360, 8371 and 1.04A for 8372

\*\* Install with a Z-bracket (BML-TJ10 for BML-8310 and BML-TJ20 for BML-8320) to accommodate in-swing doors

† Accessories may impact holding force

Choose BEST Electromagnetic Locks  
for a solution that you can trust.

bestaccess.com

dormakaba

BEST is a trademark of dormakaba USA Inc. All rights reserved.



BA-0341

© 2018 dormakaba USA Inc.