



Surface MiniMag[®] by BEST

Our low-profile MiniMag[®] is extremely popular for interior traffic control.

These short electromagnetic locks install perfectly alongside most automatic door operators or stop-mounted door hardware, reducing installation time and eliminating the need for extra brackets.

The MiniMag's[®] design of 1-7/8" width helps keep undersized openings within code. This is the ideal magnet for use on narrow-style aluminum doors. The BML-8372 double version is especially useful on pairs of doors without mullions.

- **Energy:** 500mA¹ (BML-8360) 520mA¹ (BML-8371/BML-8372) Field-Selectable 12/24VDC
- **Fire-Rated:** (BML-8371/BML-8372) CAN/ULC S104 UL 10C 1-Hour
- **Strength:** Up to 750lbf Holding Force
- **Monitoring:** (BML-8360) Built-In Remote Lock Status Sensor
(BML-8371/BML-8372) Optional Door Status Sensor (DSS)/Security Condition Sensor (SCS) Available
- **Warranty:** Lifetime Limited Warranty
- **Mode:** Fail-Safe



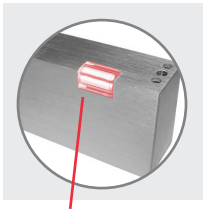
Choose BEST Electromagnetic Locks for a solution that you can trust.

Secure, convenient and easy to install.

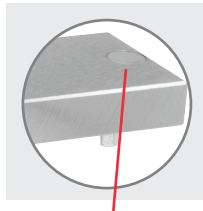
Our low-profile Surface MiniMags® provide a secure hold, ensuring proper ingress and egress at all times.

Product Specifications			
	BML-8371 Surface MiniMag® (For single outswinging doors)**	BML-8372 Surface MiniMag® (For double outswinging doors)**	BML-8360 Mortise MiniMag® (For single sliding doors)
Housing dimensions	1"(25mm)D x 1-7/8"(48mm)H x 9-3/8" (238mm)W Dimensions include 3/16" (5mm) mounting bracket	1"(25mm)D x 1-7/8"(48mm)H x 17-3/4" (238mm)W Dimensions include 3/16" (5mm) mounting bracket	1-1/16"(26.9mm)D x 1-1/2"(38.1mm)H x 9" (228.6mm)W Dimensions include 3/4" (5mm) mounting tabs
Armature plate dimensions	1/2" (13mm)D x 1-1/2" (38mm)H x 7-1/4"(185mm)W		
Voltage	Field selectable 12/24VDC; Tolerance ±10%		
Power/current requirements	Max 0.52A at 12VDC; Max 0.26A at 24VDC (each lock)		Max 0.50A at 12VDC Max 0.25A at 24VDC
Holding force	Up to 750 lbs (340kg) (one point locking)	up to 750 lbs (340kg) each (two point locking)	Up to 750 lbs (340kg) (one point locking)
Output relays	SCS (with LED)–SPDT 1.0A at 24VDC; DSS–SPDT 0.20A at 12VDC and 0.12A at 24VDC		Contacts: 0.20A at 12VDC and 0.12A at 24VDC; Dry Output Form C
Wiring requirements	2 wires–power input; Up to 5 wires output	2 or 4 wires–power input; Up to 5-10 wires output	2 wires–power input; 2 wires–relay output
Operating temperature	14° to 140° F (-10° to 60° C)		
Finishes	28 Brushed Anodized Aluminum (630) 40 Brushed Anodized Dark Bronze (690)		28 Brushed Anodized Aluminum (630)
Warranty	Lifetime Limited Warranty		
Monitoring options	SCS–Security Condition Sensor (includes LED indicator) DSS–Door Status Sensor		Built-in remote Lock Status Sensor
Certifications	UL 294 Special Locking Arrangement Component (6th Edition) CAN/ULC S104 Auxiliary Locks Listed for fire doors rated up to 1 hour UL 10C Auxiliary Locks Listed for fire doors rated up to 1 hour		N/A

Optional accessories†			
Z-bracket kit	BML-TJ71	BML-TJ72	
Glass door bracket	BML-GB7112 1/2" (13mm) BML-GB7134 3/4" (19mm)	BML-GB7212 1/2" (13mm) BML-GB7234 3/4" (19mm)	
Armature plate holder	7254175 BML AH71	7254176 BML AH71	



LED Indicator
(For 8371/8372
models with SCS
monitoring only.)



Magnetic Door Contact
(For 8371/8372 models
with DSS monitoring
only.)

BML-8371 and BML-8372



¹ Max at 12VDC for 8360, 8371 and 104A for 8372

** Install with a Z-bracket (BML-TJ10 for BML-8310 and BML-TJ20 for BML-8320) to accommodate in-swing doors

† Accessories may impact holding force

BA-0341 08/21

For questions about ordering and to be sure you get the right configuration for your needs, [contact your BEST dormakaba sales representative](#).
6161 East 75th Street, Indianapolis, IN 46250 USA | [855-365-2407](tel:855-365-2407) | bestaccess.com